

OneEach Mindful Giving Frequently Asked Questions

oneeach.com/mindful-giving



When is the donation processed?

As soon as the donor purchases an item from the Mindful Giving page, the payment (donation) is immediately sent to the nonprofit's Stripe account.



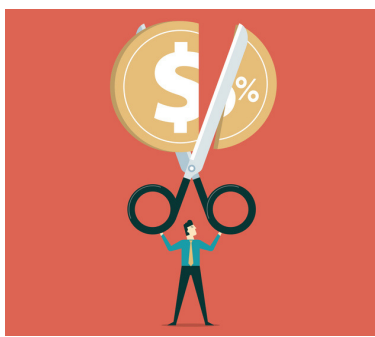
How long does a donation sit with Stripe?

This is up to the nonprofit. There are options within Stripe for the nonprofit to set up bank deposits on a pre-set schedule.



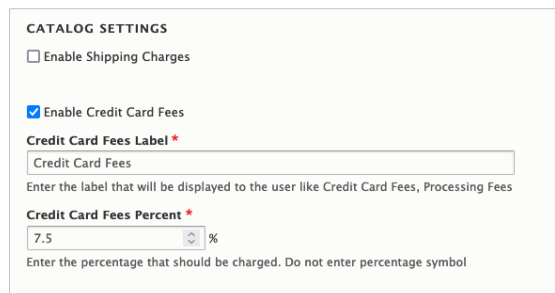
What percentage does Stripe charge for fees?

Stripe charges 2.2% + \$0.30 per transaction for their processing fees. The nonprofit can increase that amount to cover sales tax too.



Is there a way to cut the cost of fees?

The nonprofit can charge more than Stripe's fees to cover state sales tax. And, the nonprofit can have the donor pay the processing fees.



Can the name of the fees be changed?

Yes, Stripe calls it "processing fees" but the nonprofit can call the fees whatever they want.

What can be customized on the Mindful Giving platform?

The nonprofit can customize the:

- Introduction paragraph at the top of the product catalog page and the items that are listed in the catalog.
- Process fee verbiage and the percentage that is seen on the checkout page.
- Donation receipt verbiage and images.
- Product usage field on each individual item.
- Branding (colors, fonts, logo).

