



oneeach
technologies
a digital services company

Managed Hosting with
Amazon Web Services (AWS)

NONPROFITS NEED LIGHTNING-FAST, ALWAYS-ON, SECURE WEBSITE HOSTING

We've successfully supported over 1,000 nonprofits across the globe!



Your nonprofit needs cost-effective, high-performance hosting for your website. With the challenges of traffic load increases due to fundraising campaigns to small IT teams that don't have the bandwidth to manage backups, hardware infrastructure, software updates, and more, OneEach has you covered.

- ✓ 24/7 critical response
- ✓ SSL certificates
- ✓ 24/7 hosting, support, and monitoring
- ✓ 99.95% uptime SLA

Let us manage website hosting so you can focus on what's most important – your mission!

Managed Website Hosting = Amazon Web Services (AWS)

OneEach is responsible for your website, SSL certificates, deployment process, backups, hardware infrastructure, and software. We provide 99.95% Uptime SLA for all customers. Your website is hosted on a load-balanced multi-web server configuration with redundant central storage database servers.

Choose The Hosting Plan That Works Best For Your Nonprofit

Plan 1: Multi-Site Managed Hosting

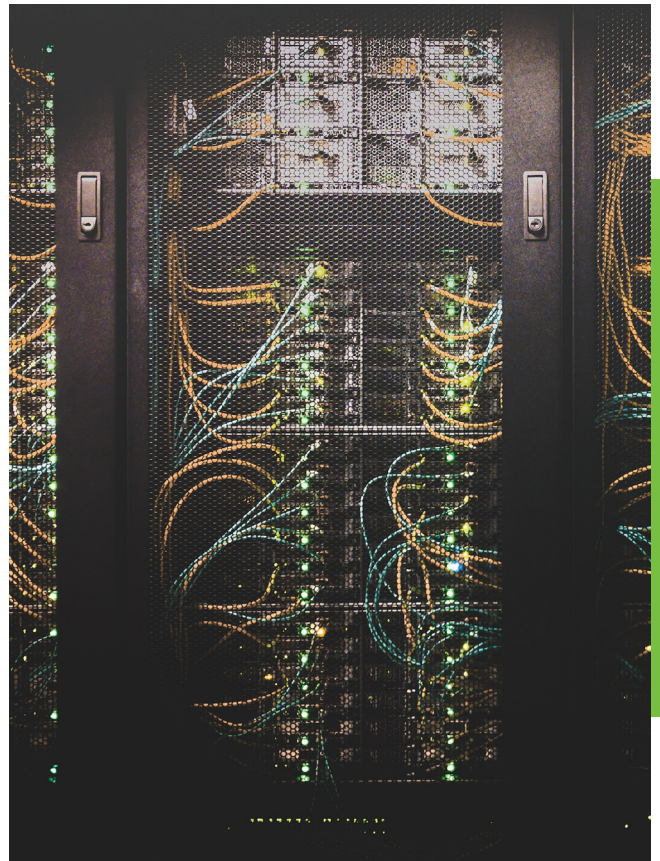
For Federated Nonprofits that have a master organization (governing control group) and chapters that operate autonomously. This would be the best fit for your multi-site to realize economies of scale.

- ✓ Website Hosting
- ✓ Managing module add-ons
- ✓ Technical Maintenance and Security Updates
- ✓ Maintaining Mobile Responsive Updates
- ✓ Nightly Backups
- ✓ Domain DNS Hosting

Plan 2: Enterprise Managed Hosting

For nonprofits that are standalone and you don't have a large IT team. This would be the best fit for your single site to get a solution tailored to your unique needs.

- ✓ Fully Managed
- ✓ Drupal Optimized Environment
- ✓ 99.95% Uptime SLA guarantee
- ✓ High Availability
- ✓ 24/7 Monitoring with proactive response to any issues that arise
- ✓ Scalability, Security & Continuity
- ✓ Backups and Disaster Recovery
- ✓ Full access to available logs
- ✓ 6- or 12-hours SLA Response Time; 24/7 on critical issues
- ✓ 24/7/365 Support



Want to learn more? Let's connect! sales@oneeach.com